

Karl Georg Häusler

Date of birth 13th of May 1975 in Halle / Saale, Germany

Position MD; Dr. med.; Fully certified Neurologist
Address Department of Neurology
Charité – University Medicine Berlin
Campus Benjamin Franklin
Hindenburgdamm 30, 12203 Berlin, Germany
Phone +49-30-8445-4244
Fax +49-30-8445-4264
e-mail georg.haeusler@charite.de



Professional Career, Awards

2010 Hans-Gerhard Creutzfeldt Scholarship of the Center for Stroke Research Berlin
2008 Fully certified Neurologist, Board Exam Neurology
2008 Ultrasound Certificate of qualification
German Society for Clinical Neurophysiology
2006 Electroencephalography Certificate of qualification
German Society for Clinical Neurophysiology
2004 - Member Critical Event Committee of the German Competence Net on Atrial Fibrillation
2002 - 2008 Neurological resident, Department of Neurology, Charité – University Medicine Berlin
2001 German Board Exam and Medical License (Rating: 1)
1997 - 1999 Doctoral thesis: Interferon- γ differentially regulates the release of glial cytokines and chemokines. [summa cum laude] Prof. Dr. H. Kettenmann, Max Delbrück Center for Molecular Medicine, Berlin, Germany
1994 - 2001 Studies in medicine at the medical schools Berlin, Montreal, Zurich

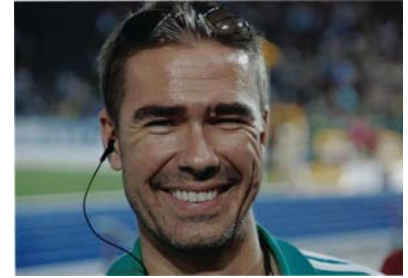
Publications

- [Häusler KG](#), Schmidt WU, Foehring F, Meisel C, Guenther C, Brunecker P, Kunze C, Helms T, Dirnagl U, Volk HD, Villringer A. Immune responses after acute ischemic stroke or myocardial infarction. *Int J Cardiol.* 2010 Nov 13.
- [Häusler KG](#), Koch L, Ueberreiter J, Coban N, Safak E, Kunze C, Villringer K, Endres M, Schultheiss HP, Fiebach JB, Schirdewan A. Safety and reliability of the insertable Reveal XT® recorder in patients undergoing 3T brain MRI. *Heart Rhythm.* 2010 Nov 8.
- [Häusler KG](#), Koch L, Ueberreiter J, Endres M, Schultheiss HP, Heuschmann PU, Schirdewan A, Fiebach JB. Stroke risk associated with balloon based catheter ablation for atrial fibrillation: Rationale and design of the MACPAF Study. *BMC Neurol.* 2010;10:63.
- [Häusler KG](#), Laufs U, Endres M. Neurological aspects of chronic heart failure. *Nervenarzt.* 2010 Aug 8.
- Katchanov J, [Häusler KG](#), Strackham J, Tepel M. Lower limb monoparesis due to liquorice consumption. *NDT Plus* 2010;10.1093/157
- Nolte CH, Jungehulsing GJ, Rossnagel K, Roll S, [Häusler KG](#), Reich A, Willich SN, Villringer A, Muller-Nordhorn J. Vascular risk factor awareness before and pharmacological treatment before and after stroke and TIA. *Eur J Neurol.* 2009;16(6):678-83.
- [Häusler KG](#), Schmidt W, Föhring F, Meisel C, Helms T, Jungehulsing GJ, Nolte CH, Schmolke K, Wegner B, Meisel A, Dirnagl U, Villringer A, Volk HD. Cellular immunodepression preceding infectious complications after acute ischemic stroke in humans. *Cerebrovasc Dis.* 2008;25(1-2):50-8.
- Prinz M, Montrasio F, Furukawa H, van der Haar ME, Schwarz P, Rülcke T, Giger OT, [Häusler KG](#), Perez D, Glatzel M, Aguzzi A. Intrinsic resistance of oligodendrocytes to prion infection. *J Neurosci.* 2004;30;24(26):5974-81.
- [Häusler KG](#), Prinz M, Nolte C, Weber JR, Schumann RR, Kettenmann H, Hanisch UK. Interferon- γ differentially modulates the release of cytokines and chemokines in lipopolysaccharide- and pneumococcal cell wall-stimulated mouse microglia and macrophages. *Eur. J. Neurosc.* 2002;16(11):2113-2122.
- Prinz M, [Häusler KG](#), Kettenmann H, Hanisch UK. Beta-adrenergic receptor stimulation selectively inhibits IL-12p40 release in microglia. *Brain Res.* 2001;899:264-270.
- Hanisch UK, Prinz M, Angstwurm K, [Häusler KG](#), Kann O, Kettenmann H, Weber JR. The protein tyrosine kinase inhibitor AG126 prevents the massive microglial cytokine induction by pneumococcal cell walls. *Eur. J. Immunol.* 2001;31:2104-2115.
- Stohwasser R, Giesebrecht J, Kraft R, Müller EC, [Häusler KG](#), Kettenmann H, Hanisch UK, Kloetzel PM. Biochemical analysis of proteasomes from microglia: Induction of immunoproteasomes by interferon- γ and lipopolysaccharide. *Glia* 2000;29:355-365.

Berlin, 30th December 2010

Curriculum Vitae

Name: Matthias Krüll
D/POB: 27.01.1968, Karlsruhe, Germany
Address: Erkelenzdamm 25, 10999 Berlin
Nationality: German



Education:

1974-1978 Primary school Höhr-Grenzhausen (HG), Germany
1978-1987 Secondary School/College HG, Germany
1987 Abitur, Gymnasium im Kannenbäckerland, HG, Germany
1987-1988 Military Service
1988-1997 Medical School Justus-Liebig-Universität (JLU) Giessen
1997 State Exam (05/97)
1998 Full Approbation (10/98)
1997-1999 Dept. Internal Med., Univ. Giessen
2000 Medical theses/Doctors degree
2000-2009 Dept. Pulm. Med./Infect. Dis, Charité, Berlin
2007-2009 Ass. Professor Int.Med./Pulm. Med., Charité, Berlin
2009- Medical Office for pulmonary and allergic diseases
2009- CEO
"Institute for Asthma and Allergic Diseases Berlin", IAAB
2010- Vice-CEO "SMS-Sports Medicine Berlin"
Medical Institute BMW-Berlin-Marathon

Professional Career, Awards:

1997 Preis der "Deutschen Gesellschaft für Pneumologie, DGP"
1997-1999 Fellowship "Deutsche Forschungsgemeinschaft", SFB547
1998 Specialisation "Emergency and Rescue Medicine"
2000 Robert Koch Preis, Charité
2002-2008 Project-Leader DFG SPP1130
2003 Specialisation "Diving Medicine"
2004 Specialisation "Internal Medicine"
2006 Specialisation "Infectious Diseases"
2007 Ass. Prof. (Habilitation) Internal and Pulmonary Medicine

2008 Specialisation „Pneumologie“
2009 Specialisation „Clinical Radiology“

Activities in Sports Medicine:

2003-2007 Membership „SCC-Berlin-Marathon Medical Team“ and „Medical Head of Operation“
seit 2008- Membership „SCC-Berlin-Marathon Medical Board“ and Vice Medical Director SCC-Berlin-Marathon
2008 TUE Deutscher Schwimmverband (DSV) und Deutscher Leichtathletikverband (DLV)
Olympiateam Peking 2008
2009 Vice Medical Director
12th IAAF World Championships in Athletics Berlin 2009
2009 International TUE 12th IAAF
World Championships in Athletics Berlin 2009
2010 Vice Medical Director ISTAF2010-Berlin

Clinical Studies:

CAPNetz (2003-06) Community-Acquired Pneumonia network trial (Phase IV, Subinvestigator)
CORTICUS (2004-06) Hydrocortisone Therapy for Patients with Septic Shock (Phase IV, Subinvestigator)
MAXSEP (2006-08) Comparison of meronem vs. meronem+moxifloxacin in severy septic patients (Phase IV, Subinvestigator)
Omalizumab IA E25 Novartis (Phase IIA, Subinvestigator)
Omalizumab ER Study Novartis (Phase IIB, Subinvestigator)
M.O.B.I.L.I.S. Berlin Gruppe 6 (2009-10)
BV2006/2007 CRM (Phase IV, Principal Investigator, 2009-10)
P05575 Schering-Plough (Phase IIB, Principal Investigator, 2009-13)
BOE205.452 (Tiospir) Boeringer Ingelheim (Phase IV, Principal Investigator, 2010-11)
QAW039a2201 Novartis (Phase IIA, Principal Investigator 2010-2011)
GSK243.292 GlaxoSmithKline (Phase IIA, Principal Investigator 2011-12)

Matthias Endres, M.D.

Charité Universitätsmedizin Berlin, Campus Mitte
Klinik und Poliklinik für Neurologie
Charitéplatz 1, 10117 Berlin
Tel: +49 (0)30 – 450560102
Email: matthias.endres@charite.de



Curriculum vitae:

2008-	Director, Department of Neurology, Charité-Universitätsmedizin Berlin
2008-	W3- Professorship at the Charité Berlin
2008	Offer for W3-Professorship for Neurology at University of Würzburg (declined)
2008	Offer for W3-Professorship for Neurology at University of Leipzig (declined)
2008-	Director, Center for Stroke Research Berlin
2005-2008	W2-Professorship Interdisciplinary Stroke Research (Lichtenberg Program, VolkswagenFoundation)
2003-2005	Heisenberg-Program (Deutsche Forschungsgemeinschaft)
2004-2007	Attending physician Dept Neurology Charité (Stroke Unit and Intensive Care Unit)
1998-2003	Neurological resident Dept Neurology Charité (Prof. Einhäupl)
1998-2004	Group leader "Cerebral Ischemia" at Dept Experimental Neurology Charité (Prof. Dirnagl)
1996-1998	Fellow at Neuroscience Center, Massasuchetts General Hospital, Harvard Medical School, Boston (Prof. Moskowitz)
1994-1996	Neurological resident, Medical University of Lübeck (Prof. Kömpf)
1988 - 1994	Studies in medicine at the medical schools Bochum, New York, Toronto, Hamburg
1975 - 1988	Higher school education (Abitur) Kolleg St. Blasien

Research fields

My group is active in the field of stroke research with the following major areas:

- preventive vascular mechanisms (endothelial function, physical activity, pharmacology)
- mechanisms of cell death (cell cycle activation, DNA damage and repair, apoptosis)
- regeneration and functional outcome (cellular plasticity, neurogenesis)
- clinical studies (stroke unit, telemedicine)

Activities in the scientific community, honors, awards

2009	Board of Directors, German Stroke Society (DSG)
2008	Pette Award, German Society of Neurology (DGN)
2005	Board of Directors, Int. Soc Cereb Blood Flow Metabolism (ISCBFM)
2005	Board of Directors, German Society Telemedicine (DGTel)
2005	Editorial Board <i>J Cereb Blood Flow Metab</i> (JCBFM)
2003	Editorial Board <i>Stroke</i> (American Heart Association)
2005	Lichtenberg Professorship VolkswagenFoundation
2003-2005	Heisenberg Scholarship, Deutsche Forschungsgemeinschaft
2002	Paul-Martini-Award, Paul-Martini-Foundation
2000	Adolf-Wallenberg-Award (German Society of Neurology)
1999	Nils Lassen Award, Int. Soc. Cereb. Blood Flow Metabolism

1999	Wissenschaftspreis (Science Award), Stiftung Dt. Schlaganfall-Hilfe
1998	Oskar-Lapp Award, German Society Cardiology
1991-1994	Studienstiftung des Dt. Volkes (German National Scholarship)

Selected Publications

- Endres M, Heuschmann PU, Laufs U, Hakim A (2011) Primary prevention of stroke: Blood pressure, lipids and heart failure. *European Heart Journal*, in the press
- Kronenberg G, Gertz K, Cheung G, Buffo A, Kettenmann H, Götz M, Endres M (2010) Modulation of fate determinants Olig2 and Pax6 in resident glia evokes spiking neurons receiving synaptic input in a model of mild brain ischemia. *Stroke*, in the press
- Kronenberg G, Endres M (2010) Neuronal injury - Folate to the rescue? *J Clin Invest*, Apr 26. pii: 40764. doi: 10.1172/JCI40764. [Epub ahead of print]
- Kronenberg G, Gertz K, Baldinger T, Eckart S, Ji S, Yildirim F, Heuser I, Schröck H, Hörtnagl H, Djoufack PC, Hellweg R, Fink KB, Endres M (2010) Impact of actin filament stabilization on adult hippocampal and olfactory bulb neurogenesis in vivo. *J Neurosci*, 30:3419-31
- Kronenberg G, Harms C, Sobol R, Cardozo-Pelaz F, Winter B, Balkaya M, Gertz K, Hellweg R, Ahmadi M, Juckel G, Linhard H, Hörtnagl H, Jaenisch R, Endres M (2008). Folate deficiency induces neurodegeneration and brain dysfunction in animals lacking uracil-DNA glycosylase. *J Neurosci*, 28:7219-7230
- Prinz V, Laufs U, Gertz K, Kronenberg G, Leithner C, Lindauer U, Endres M (2008) Intravenous rosuvastatin for acute stroke treatment. *Stroke* 39:433-438
- Hauck L, Harms C, Rohne J, Dietz R, Gertz K, Endres M, von Harsdorf R (2008) Protein kinase CK2 links extracellular growth-factor signaling with control of p27KIP1 stability in the heart. *Nature Medicine* 14: 315-324
- Gertz K, Priller J, Kronenberg G, Winter B, Schröck H, Ji S, Milosevic M, Harms C, Böhm M, Dirnagl U, Laufs U, Endres M (2006) Physical activity improves long-term stroke outcome via eNOS-dependent augmentation of neo-vascularization and cerebral blood flow. *Circulation Res* 99: 1132-1140
- Stroh A, Zimmer C, Weir K, Werner N, Gertz K, Kronenberg G, Zimmer C, Mueller S, Sieland K, Nickenig G, Endres M (2006) Tracking of systemically administered mononuclear cells in the ischemic brain by high-field magnetic resonance imaging. *Neuroimage*, 33:886-897
- Winter B, Juckel G, Viktorov I, Katchanov J, Gietz A, Sohr R, Balkaya M, Hörtnagl H, Endres M (2005) Anxious and hyperactive phenotype following brief ischemic episodes in mice. *Biol Psychiatry*. 57:1166-1175
- Endres M, Biniskiewicz D, Sobol RW, Harms C, Ahmadi M, Lipski A, Katchanov J, Mergenthaler P, Dirnagl U, Wilson SH, Meisel A, & Jaenisch R (2004) Increased postischemic brain injury in mice deficient in uracil DNA glycosylase. *J Clin Invest* 113:1711-1721
- Endres M, Laufs U, Liao JK, & Moskowitz MA (2004) Targeting eNOS for stroke protection. *Trends Neurosci* 27:283-289.
- Endres M, Gertz K, Lindauer U, Katchanov J, Schultze J, Schröck H, Kuschinsky W, Dirnagl U, & Laufs U (2003) Physical activity protects from stroke in mice via eNOS-dependent mechanisms. *Ann Neurol* 54:582-590.
- Katchanov J, Harms, C, Gertz K, Priller J, Waeber C, Hirt L, Brück W, Moskowitz MA, Bhide P, Dirnagl U, & Endres M. (2001) Mild cerebral ischemia induces loss of cyclin dependent kinase inhibitors and activation of cell cycle machinery prior to delayed neuronal cell death. *J Neurosci* 21:5045-5053.
- Laufs U*, Endres M*, Stagliano NE, Amin-Hanjani S, Chui D-S, Yang S-Y, Simoncini T, Yamada M, Rabkin E, Allen PG, Huang PL, Böhm M, Schoen FJ, Moskowitz MA, & Liao JK (2000) Neuroprotection mediated by changes in endothelial actin cytoskeleton. *J Clin Invest* 106:15-24. (equal contribution)
- Endres M, Fink K, Zhu J, Stagliano NE, Bondada V, Geddes JW, Azuma T, Mattson MP, Kwiatkowski DJ, Moskowitz MA (1999) Neuroprotective effects of gelsolin and analogues during murine stroke. *J Clin Invest* 103:347-354
- Endres M, Laufs U, Huang Z, Nakamura T, Huang PL, Liao JK, Moskowitz MA (1998) Stroke protection by 3-hydroxy-3 methylglutaryl (HMG)-CoA reductase inhibitors mediated by endothelial nitric oxide synthase. *Proc Natl Acad Sci USA* 95:8880-8888

Berlin, Dec 30 2010



Prof. Dr. med. Wilhelm Haverkamp

(* 1961)

Cardiology at Campus Virchow-Klinikum,
Charité – Universitätsmedizin Berlin

Augustenburger Platz 1

D-13353 Berlin, Germany

Tel.: 030 / 450 553 752 / 742

E-mail: wilhelm.haverkamp @charite.de



Curriculum vitae

Since 2007	Deputy Medical Director of the Department of Cardiology, Campus Virchow-Klinikum, Charité – Universitätsmedizin Berlin
2007	Degree of a University-Professor awarded
Since 2002	Faculty member of the Department of Cardiology, Campus Virchow-Klinikum, Charité – Universitätsmedizin Berlin
2001	Specialization in cardiology
2001	"Venia legendi" in internal medicine
1999	Fritz-Acker-Award for cardiological research
1995 - 2002	Faculty member of the Department of Cardiology of the University Hospital Münster
1989 - 1995	Internship at the Department of Cardiology, University Hospital Münster
1988	MD degree at the University of Münster

Research fields

- Mechanisms of cardiac arrhythmias
- Pharmacological and non-pharmacological treatment of cardiac arrhythmias
- Genetics of congenital arrhythmogenic disease
- Risk stratification after myocardial infarction
- Mechanisms and therapy of acute heart failure
- Cardiovascular safety of drugs

Activities in the scientific community, honors, awards

Member of numerous editorial boards und scientific advisory panels. Regular consultant for scientific journals and institutions. Regular consultant for regular authorities. Fritz-Acker-Award 1999.

Selected publications

- *Schade R, Andersohn F, Suissa S, Haverkamp W, Garbe E. **Dopamine agonists and the risk of cardiac-valve regurgitation.** N Engl J Med. 2007;356:29-38. **IF 44.0**
- *Haverkamp W, Breithardt G. **Drug-induced sudden cardiac death.** Eur Heart J. 2005;26:1808-1809. **IF 6.2**
- Stypmann J, Glaser K, Roth W, Tobin DJ, Petermann I, Matthias R, Monnig G, Haverkamp W, Breithardt G, Schmahl W, Peters C, Reinheckel T. **Dilated cardiomyopathy in mice deficient for the lysosomal cysteine peptidase cathepsin L.** Proc Natl Acad Sci USA 2002; 99: 6234 – 6239. **IF: 10.5**
- *Haverkamp W, Breithardt G, Janse MJ, Camm AJ, Rosen MR, Antzelevitch C, Escande D, Franz M, Malik M, Moss A, Shah R, and the other speakers in the sessions and the chairs of the workshops. **The potential for QT prolongation by non-antiarrhythmic drugs. Clinical and regulatory implications.** Report on a policy conference of the European Society of cardiology. Eur Heart J 2000;21:1216-1231. **IF 6.2**
- Priori SG, Barhanin J, Hauer RN, Haverkamp W, Jongsma HJ, Kleber AG, McKenna WJ, Roden DM, Rudy Y, Schwartz K, Schwartz PJ, Towbin JA, Wilde A: **Genetic and molecular basis of cardiac arrhythmias; impact on clinical management. Part I and II.** Circulation 1999;99:518-528. **IF 12.6**
- Priori SG, Barhanin J, Hauer RN, Haverkamp W, Jongsma HJ, Kleber AG, McKenna WJ, Roden DM, Rudy Y, Schwartz K, Schwartz PJ, Towbin JA, Wilde A: **Genetic and molecular basis of cardiac arrhythmias; impact on clinical management. Part III.** Circulation 1999;99:674-681. **IF: 12.6**

- *Haverkamp W, Martinez-Rubio A, Hief C, Lamers A, Mühlenkamp S, Wichter T, Breithardt G, Borggreffe M. **Efficacy and safety of d,l-sotalol in patients with ventricular tachycardia or survivors of cardiac arrest.** J Am Coll Cardiol 1997; 30: 487-495. **IF 9.1**
- *Haverkamp W, Eckardt L, Borggreffe M, Breithardt G. **Drugs versus devices in controlling ventricular tachycardia, ventricular fibrillation, and recurrent cardiac arrest.** Am J Cardiol 1997;80:67G-73G. **IF: 3.0**
- *Böcker D, Haverkamp W, Block M, Borggreffe M, Hammel D, Breithardt G. **Comparison of d,l-sotalol and implantable defibrillators for treatment of sustained ventricular tachycardia or fibrillation in patients with coronary artery disease.** Circulation, 1996;94:151-157. **IF 12.6**
- *Haverkamp W, Hindricks G, Gülker H. **Antiarrhythmic properties of β -blockers.** J Cardiovasc Pharmacol 1990; 16 (suppl 5): S29-S32. **IF 2.4**

International cooperations

- Prof. Dr. M. Voss, University of Utrecht, The Netherlands
- Prof. Dr. R. Woosley, University of Tucson, Arizona, USA
- Prof. Dr. M. Franz, University of Washington, Washington, USA
- Prof. Dr. S. Cobbe Glasgow Royal Infirmary, Glasgow, Scotland, UK

Clinical studies (selection)

- *CIBIS-ELD. Vergleich von Bisoprolol mit Carvedilol bei älteren Patienten mit Herzinsuffizienz - eine randomisierte, doppelblinde Multicenterstudie (CIBIS-ELD), eine Studie im Kompetenznetz Herzinsuffizienz.
- *RELY. Randomized Evaluation of long term anticoagulant therapy.
- Member of several Data Safety Monitoring Boards and Critical Event Committees of large multinational studies (e.g. MOTIV, REVIVE, SURVIVE)

Priv. Doz. Dr. med. Jochen B. Fiebach

(* 1969)

Charité - Universitätsmedizin Berlin,
Campus Benjamin Franklin
CSB Akademische Neuroradiologie
Hindenburgdamm 30
12200 Berlin
fon: 030 / 8445 -4088
fax: 030 / 8445 -4099
E-Mail: jochen.fiebach@charite.de



Curriculum vitae

since 07.2006	Consultant Neuroradiology, Head of Division Academic Neuroradiology Center for Stroke Research Berlin (CSB) Charité - Universitätsmedizin Berlin
02.2005 – 06.2006	Consultant Neuroradiology at Institute for Diagnostic and Interventional Radiology und Neuroradiology, Prof. Dr. M. Forsting, University Essen
2004	Habilitation und venia legendi Neuroradiology Univ. Heidelberg
11.2004	Consultant neuroradiology
12.2002	Consultant diagnostic radiology
12.1999	Promotion (Dr. med.) Neurology at Univ. Heidelberg
06. 1996 – 01.2005	MD at Div. for Neuroradiology, University Heidelberg
during this period:	
1 year	Pediatric Neuroradiology, Department for Pediatric Radiology, Prof. J. Tröger
1 year	General Radiology, Prof. G. Kaufmann
1 year	Stroke Unit, Department for Neurology, Prof. W. Hacke
1990 – 1996	Medical School, University of Heidelberg

Scientific Affiliations:

DGMR	Deutsche Gesellschaft für Neuroradiologie
DRG	Deutsche Röntgengesellschaft
DSG	Deutsche Schlaganfallgesellschaft
ASA	American Stroke Association

Randomized clinical trials:

- DIAS III & IV Speaker Imaging group
- DIAS II Imaging group, S. Warch, H. Rowley, J. Fiebach, M. Wintermark, S. Pedraza, Phase III-Studie,
- DSPA phase II trial Japan; member of imaging committee
- SATIS, Siebler, Villringer, Röther, von Reutern, Hennerici, Witte, Fiebach. Safety trial on Tirofiban in stroke
- Axis trial Imaging group: Fiebach, Hermier, Phase II-trial
- Wyeth AD trials
- Novartis AD trials

Scientific Journals:

Editorial Board Member:	Stroke
Reviewer:	Journal of Cerebral Blood Flow & Metabolism, Cerebrovascular Diseases RöFo European Radiology, Lancet Neurology Journal of Neuroimaging

Publications

1st author:

1. Fiebach J, Brandt T, Knauth M, Jansen O (1999) MRI with fat suppression improves visualization of arterial wall hematoma in spontaneous dissection of the internal carotid artery. *Fortschr Röntgenstr* 171: 290-293. IF 1,5
2. Fiebach JB, Seitz A, Schellinger PD, Zieger B (1999) Das Schädel-Hirn-Trauma des Kindes. *Der Radiologe* 39: 463-466. IF 0,7
3. Fiebach J, Wunsch R (2000) Zerebrotendinöse Xanthomatose bei Kleinwuchs einer 12-jährigen Patientin. *RöFo* 172: 301-302. IF 1,5
4. Fiebach J, Jansen O, Schellinger P, Knauth M, Hartmann M, Heiland S, Ryszel H, Pohlens O, Hacke W, Sartor K (2001) Comparison of CT with diffusion-weighted MRI in patients with hyperacute stroke. *Neuroradiology* 43: 628-632. IF 1,1
5. Fiebach J, Haehnel S (2002) Diffuse idiopathische Skeletthyperostose (DISH). *RöFo* 174: 927-928. IF 1,5
6. Fiebach J, Schellinger P, Jansen O, Meyer M, Wilde P, Bender J, Schramm P, Jüttler E, Oehler J, Hartmann M, Hähnel S, Knauth M, Hacke W, Sartor K (2002) CT and diffusion-weighted MR imaging (DWI) in randomized order: DWI results in higher accuracy and lower interrater variability in the diagnosis of hyperacute ischemic stroke. *Stroke* 33: 2206-2210. IF 5,3
7. Fiebach JB, Schellinger PD (2002) Modern magnetic resonance techniques with stroke. *Nervenarzt* 73: 104-117. IF 0,92
8. Fiebach J, Jansen O, Schellinger P, Heiland S, Hacke W, Sartor K (2002) Serial analysis of the apparent diffusion coefficient (ADC) time course in human stroke. *Neuroradiology* 44: 294-298. IF 1,1
9. Fiebach JB, Schellinger P. Local and systemic thrombolysis in acute stroke. *Imaging Decisions*. 2003;7:26-30. IF ∅
10. Fiebach JB, Schellinger PD (2003) Modern magnetic resonance techniques with stroke. *Der Radiologe* 43: 251-264. IF 0,7
11. Fiebach J.B., Schellinger PD, Geletneky K, Wilde P, Meyer M, Hacke W, Sartor K (2004) Stroke MRI in hyperacute subarachnoidal hemorrhage in humans. *Neuroradiology* 46(1):44-48 IF 1,1
12. Fiebach J.B., Schellinger PD, Gass A, Kucinski T, Siebler M, Villringer A, Ölkens P, Hirsch J, Heiland S, Wilde P, Jansen O, Röther J, Hacke W, Sartor K, für das Kompetenznetzwerk Schlaganfall (2004) Stroke MRI is accurate in hyperacute intracerebral hemorrhage. A multicenter study on the validity of stroke imaging. *Stroke* 35(2): 502-507 IF 5,3
13. Fiebach JB, Harting I (2004) Der klinische Einsatz der diffusionsgewichteten MRT am Gehirn. *Radiologie up2 date* IF ∅
14. Fiebach JB, Schellinger PD (2005) Bildgebung bei zerebrovaskulären Notfällen. *Intensivmedizin up2 date* IF ∅
15. Fiebach JB, Schlamann M, Schellinger PD (2005) MR-Diffusion und Perfusion beim Schlaganfall. *Der Radiologe* 45(5):412-4, 416-9 IF 0,7
16. Fiebach JB, Ebinger M. (2008) Bildgebende Diagnostik beim Schlaganfall. *Klinikarzt*
17. Fiebach JB, Steiner T, Neumann-Haefelin T (2009) Bildgebende Diagnostik bei intrazerebralen Blutungen. *Der Nervenarzt*; 80: 205-213 IF 0,6
18. Fiebach JB, Schellinger PD (2009) MR Mismatch Is Useful for Patient Selection for Thrombolysis. *Yes. Stroke*;40 (8):2906-7 IF 7,0
19. Fiebach JB, Bohner G. (2010) T2* weighted imaging enables excellent interobserver concordance but should not be considered as sole gold standard imaging for HT classification after thrombolysis. *Cerebrovasc Dis* 2010; 29:605-606 IF 3,5
20. Fiebach JB, Hopt A, Vucic T, Brunecker P, Nolte CH, Doege C, Villringer K, Jungehulsing GJ, Kunze C, Wegener S, Villringer A. (2010) Inverse mismatch and lesion growth in small subcortical ischaemic stroke. *Eur Radiol*. 2010 Jun 23. [Epub ahead of print PMID: 20571802] IF 3,6

Senior author:

21. Weber MA, Steiner T, Fiebach J (2002) Ungewöhnliche Ursache einer akuten Bewusstseinsbeeinträchtigung. *Der Radiologe*: 42: 833-836 IF 0,7
22. Schellinger PD, Fiebach JB (2003) Diagnostik und Therapie des akuten Schlaganfalls. *Fortschritte Neurologie Psychiatrie* 71: 1-19 IF 0,5
23. Sartor K, Fiebach JB. (2003) Clinical utility of diffusion and perfusion MR imaging in acute stroke. *Imaging Decisions*. 7:13-25. IF ∅
24. Schellinger P.D., Fiebach JB. (2004) Stellenwert moderner CT-Techniken bei der Diagnostik des akuten Schlaganfalls. *Der Radiologe* 44 (4):380-388. IF 0,7
25. Schellinger PD, Fiebach JB. (2005) PWI/DWI Mismatch on MRI can now be used to select patients for rt-PA beyond 3 hours - *Pro. Stroke* 36;1098-1101 IF 5,3
26. Wintermark M, Fiebach JB. (2006) Iodinated and gadolinium contrast media in computed tomography (CT) and magnetic resonance (MR) stroke imaging. *Curr Med Chem*, 13:2717-2723 IF 5,2

27. Schellinger PD, Fiebach JB (2008): Establishing final infarct volume: Stroke lesion evolution past 30 days is insignificant. *Stroke*;39:2693-2694 IF 6,3
28. Ebinger M, Jungehülsing GJ, Endres M, Fiebach JB (2008) Erfolgreiche Thrombolyse nach Schlaganfall bei einer 92-jährigen Patientin. *Dtsch Med Wochenschr*;133:2559-2561. IF 0,4
29. Siebler M, Junghans U, Fiebach J (2008) Bildgebung bei zerebrovaskulärer Erkrankung. *Herz*;33:482-488 IF 0,4
30. Bruder O, Göricke S, Hunold P, Lowitsch M, Barkhausen J, Sabin GV, Forsting M, Fiebach JB (2009) Myocardial Scars are an Underestimated Cardiovascular Burden in Patients with ICA stenosis. *Cerebrovasc Diseases* May 20;28(1):80-87 IF 2,5
31. Ebinger M, Fiebach JB (2009) Magnetic resonance imaging for acute stroke *Nervenheilkunde* 28; 3: 125-128
32. Ebinger Martin, Ivana Galinovic, Michal Rozanski, Peter Brunecker, Matthias Endres, Jochen B. Fiebach (2009) FLAIR evolution within 12 hours from stroke onset – a reliable tissue clock? *Stroke* Feb;41:250-5 IF 7,0
33. Martin Ebinger, Peter Brunecker, Gerhard J Jungehülsing, Uwe Malzahn, Claudia Kunze, Matthias Endres, Jochen B Fiebach (2009) Reliable Perfusion Maps in Stroke MRI Using Arterial Input Functions derived from Distal MCA Branches *Stroke* Jan;41(1):95-101 IF 7,0
34. Kloska SP, Wintermark M, Engelhorn T, Fiebach JB. (2009) Acute stroke magnetic resonance imaging: current status and future perspective. *Neuroradiology*. 52;3: 189-201 IF 2,0
35. Hotter B, Pittl S, Ebinger M, Oepen G, Jegzentis K, Kudo K, Rozanski M, Schmidt WU, Brunecker P, Xu C, Martus P, Endres M, Jungehülsing GJ, Villringer A, Fiebach JB.(2009) Prospective study on the mismatch concept in acute stroke patients within the first 24 h after symptom onset - 1000Plus study. *BMC Neurol*. 2009 Dec 8;9:60 IF 2,8
36. Ebinger M, Ostwaldt AC, Galinovic I, Rozanski M, Brunecker P, Nolte CH, Endres M, Fiebach JB (2010) Clinical and radiological courses do not differ between FLAIR positive and negative stroke patients after thrombolysis. *Stroke*. 2010 Aug;41(8):1823-5. IF 7,0
37. Rozanski M, Ebinger M, Schmidt WU, Hotter B, Pittl S, Heuschmann PU, Jungehülsing JG, Fiebach JB. (2010) Hyperintense acute reperfusion marker on FLAIR is not associated with early haemorrhagic transformation in the elderly. *Eur Radiol*. 2010 Jul 21. [Epub ahead of print PMID: 20652257] IF 3,6
38. Haeusler KG, Koch L, Ueberreiter J, Endres M, Schultheiss HP, Heuschmann PU, Schirdewan A, Fiebach JB (2010) Stroke risk associated with balloon based catheter ablation for atrial fibrillation: Rationale and design of the MACPAF Study. *BMC Neurol*. 2010 Jul 21;10(1):63 IF 2,8

2nd author:

39. Dörfler A, Fiebach J, Wanke I, Forsting M, Henseke P, Sartor K (1999) Iodixanol in cerebral computed tomography: a randomized, double-blind, phase-III, parallel study with iodixanol and iohexol. *Eur Radiol* 9: 1362-1365. IF 1,3
40. Haßfeld S, Fiebach J, Widmann S, Heiland S, Mühling J (2001) Magnetresonanztomographie zur Planung vor dentaler Implantation. *Mund Kiefer GesichtsChir* 5: 186-192. IF ∅
41. Schellinger PD, Fiebach JB, Mohr A, Ringleb PA, Jansen O, Hacke W (2001) Thrombolytic therapy for ischemic stroke-A review. Part I-Intravenous thrombolysis. *Crit Care Med* 29: 1812-1818. IF 3,5
42. Schellinger PD, Fiebach JB, Mohr A, Ringleb PA, Jansen O, Hacke W (2001) Thrombolytic therapy for ischemic stroke-A review. Part II-Intra-arterial thrombolysis, vertebrobasilar stroke, phase IV trials, and stroke imaging. *Crit Care Med* 29: 1819-1825. IF 3,5
43. Schellinger P, Fiebach J, Jansen O, Ringleb P, Mohr A, Steiner T, Heiland S, Schwab S, Pohlers O, Ryssel H, Orakcioglu B, Sartor K, Hacke W (2001) Stroke Magnetic Resonance Imaging Within 6 Hours after Onset of Hyperacute Cerebral Ischemia. *Ann Neurol* 49: 460-469 IF 8,5
44. Schellinger PD, Fiebach J, Mohr A, Kollmar R, Schwarz S, Schäbitz W-R, Sartor K, Hacke W. (2001) Stellenwert des schlaganfall-mrt bei zerebralen und subarachnoidalen blutungen. *Nervenarzt*. 72: 907-917. IF 0,92
45. Schellinger P, Fiebach J, Ringleb P, Jansen O, Hacke W (2001) Thrombolysis in cerebral ischemia. An overview. *Nervenarzt* 72: 590-599. IF 0,9
46. Schellinger P, Fiebach J, Röther J (2002) MRT-Diagnostik beim akuten Schlaganfall. *Intensivmed* 39: 171-182. IF ∅
47. Fiehler J, Fiebach J, Gass A, Hoehn M, Kucinski T, Neumann-Haefelin T, Schellinger P, Siebler M, Villringer A, Röther J, "Kompetenz Netzwerk Schlaganfall" (2002) Diffusion Weighted Imaging In Acute Stroke -A Tool Of Uncertain Value ? *Cerebrovascular Diseases*. 14:187-196 IF 1,9
48. Schellinger PD, Fiebach JB, Hacke W (2003) Imaging-based decision making in thrombolytic therapy for ischemic stroke: present status. *Stroke* 34: 575-583. IF 5,3
49. Weber MA, Fiebach J, Lichy MP, Weber R, Schwark C, Grau A (2003) Bilateral cerebral air embolisation. *J Neurol* 250:1115-1117 IF 3,3
50. Schellinger PD, Fiebach JB, Hoffmann K, Becker K, Orakcioglu B, Kollmar R, Jüttler E, Schramm P, Schwab S, Sartor K, Hacke W (2003) Stroke MRI in intracerebral hemorrhage. Is there a perihemorrhagic penumbra? *Stroke* 34: 1674-1680 IF 5,3
51. Schellinger PD, Fiebach JB, Klingmann C, Meinck HM (2003) Neurologische Komplikationen renaler Erkrankungen – Urämische Enzephalopathie und Neuropathie, Dialyseenzephalopathie und Dysäquilibriumsyndrom. *Akt Neurol*. 30:375-381 IF 0,3

52. Schellinger PD, Fiebach JB, Chalela JA (2004) Intracranial Hemorrhage – The role of MRI Neurocritical Care 1:31-45 IF 0
53. Orakcioglu B, Fiebach JB, Steiner T, Kollmar R, Jüttler E, Becker K, Schwab S, Heiland S, Meyding-Lamade UK, Schellinger PD (2005) Evolution of early perihemorrhagic changes--ischemia vs. edema: an MRI study in rats. *Exp Neurol.* 2005 Jun;193(2):369-76. IF 3,8
54. Jüttler E, Fiebach JB, Schellinger PD (2006) Diagnostic imaging for acute ischemic stroke management. *Expert Rev Med Devices.* Jan; 3(1):113-26. IF 0,8
55. Ledezma CJ, Fiebach JB, Wintermark M. (2009) Modern imaging of the infarct core and the ischemic penumbra in acute stroke patients: CT versus MRI. *Expert Rev Cardiovasc Ther.* 2009 Apr;7(4):395-403.

Other authorship:

56. Bertram M, Ringleb P, Fiebach J, Orberk E, Brandt T, Hacke W (1999) Spectrum of neurological symptoms in dissections of brain-supplying arteries. *Dtsch Med Wochenschr.* 124: 273-278. IF 0,7
57. Schellinger PD, Jansen O, Fiebach JB, Hacke W, Sartor K (1999) A Standardized MRI Stroke Protocol: Comparison with CT in Hyperacute Intracerebral Hemorrhage. *Stroke* 30: 765-768. IF 5,3
58. Jansen O, Schellinger PD, Fiebach JB, Hacke W, Sartor K (1999) Early recanalization in acute ischemic stroke saves tissue at risk defined by MRI. *Lancet* 353: 2036-2037. IF 13,3
59. Schellinger P, Schmutzhard E, Fiebach J, Pfausler B, Maier H, Schwab S (2000) Polymyelinic-like illness in central European encephalitis. *Neurology* 55: 299-302. IF 5,2
60. Schellinger P, Jansen O, Fiebach J, Pohlert O, Ryssel H, Heiland S, Steiner T, Hacke W, Sartor W (2000) Feasibility and Practicality of MR Imaging of stroke in the Management of Hyperacute Cerebral Ischemia. *Am J Neuroradiol* 21: 1184-1189. IF 2,2
61. Schellinger P, Jansen O, Fiebach J, Heiland S, Steiner T, Schwab S, Pohlert O, Ryssel H, Sartor K, Hacke W (2000) Monitoring Intravenous Recombinant Tissue Plasminogen Activator Thrombolysis for Acute Ischemic Stroke with Diffusion and Perfusion MRI. *Stroke* 31: 1118-1128. IF 5,3
62. Dietrich O, Herlihy A, Dannels W, Fiebach J, Heiland S, Hajnal J, Sartor K (2001) Diffusion-weighted imaging of the spine using radial k-space trajectories. *Magnetic Resonance in Physics, Biology and Medicine* 12: 23-31. IF 2,0
63. Schellinger P, Schwab S, Krieger D, Fiebach J, Steiner T, Hund E, Hacke W, HM M (2001) Masking of vertebral artery dissection by severe trauma to the cervical spine. *Spine* 26: 314-319. IF 1,9
64. Schellinger P, Wiesemann A, Fiebach JB, Mohr A, Ringleb PA, Steiner T (2001) Präklinisches Management – Akutversorgung von Schlaganfallpatienten. *Notfallmedizin* 27:80-85 IF 0
65. Röther J, Schellinger PD, Gass A, Siebler M, Villringer A, Fiebach JB, Fiehler J, Jansen O, Kucinski T, Schoder V, Szabo K, Junge-Hülsing GJ, Hennerici M, Zeumer H, Sartor K, Weiller C, Hacke W. (2002) Effect of intravenous thrombolysis on mri parameters and functional outcome in acute stroke <6 hours. *Stroke* 33:2438-2445 IF 5,3
66. Jansen O, Schellinger P, Fiebach J, Sartor K, Hacke W (2002) Magnetic resonance imaging in acute stroke: diagnostic options, results and perspectives. *Deutsches Ärzteblatt* 99: 1140-1145. IF 0
67. Schramm P, Schellinger PD, Fiebach JB, Heiland S, Jansen O, Knauth M, Hacke W, Sartor K (2002) Comparison of CT and CT angiography source images with diffusion-weighted imaging in patients with acute stroke within 6 hours after onset. *Stroke* 33: 2426-2432. IF 5,3
68. Oehler J, Gandjour J, Fiebach J, Schwab S (2003) Beidseitige A.-vertebralis- Dissektion nach chiropraktischer Behandlung. *Orthopäde* 32(10):911-3 IF 0,41
69. Oehler J, Lichy Ch, Gandjour J, Fiebach J, Grau A (2003) Dissection of four cerebral arteries after protracted birth. *Nervenarzt* 74: 366-369 IF 0,92
70. Sartor K, Hartmann M, Fiebach J, Harting I, Wilhelm T, Heiland S, (2003) Normale und pathologische Wasserdiffusion im Gehirn. *RöFo* 175: 1317-1329 IF 1,5
71. Neumann-Haefelin T, du Mesnil de Rochemont R, Fiebach JB, Gass A, Nolte C, Kucinski T, Röther J, Siebler M, Singer O, Szabo K, Villringer A, Schellinger PD (2004) Effect of incomplete (spontaneous and post-thrombolytic) recanalization following middle cerebral artery occlusion: A magnetic resonance imaging study. *Stroke* 35: 109-114 IF 5,3
72. Wegener S, Gottschalk B, Jovanovic V, Knab R, Fiebach JB, Schellinger PD, Kucinski T, Jungehülsing GJ, Brunecker P, Müller B, Banasik A, Amberger N, Wernecke KD, Siebler M, Röther J, Villringer A, Weier M; MRI in Acute Stroke Study Group of the German Competence Network Stroke. (2004) Transient ischemic attacks before ischemic stroke: preconditioning the human brain? A multicenter magnetic resonance imaging study. *Stroke*;35 (3):616-621 IF 5,3
73. Schramm P, Schellinger PD, Klotz E, Kallenberg K, Fiebach JB, Kulkens S, Heiland S, Knauth M, Sartor K (2004) Comparison of Perfusion Computed Tomography and Computed Tomography Angiography Source Images With Perfusion-Weighted Imaging and Diffusion-Weighted Imaging in Patients With Acute Stroke of Less Than 6 Hours' Duration. *Stroke* 35(7):1652-1658 IF 5,3
74. Kress B, Rasche D, Fiebach J, Tronnier V, Sartor K, Stippich C. (2004) MR-Volumetrie des N. trigeminus bei Patienten mit einseitigen Gesichtsschmerzen. *Rofo* May;176(5):719-23. IF 1,77
75. Eggers G, Rieker M, Fiebach J, Kress B, Dickhaus H, Hassfeld S (2005) Geometric accuracy of magnetic resonance imaging of the mandibular nerve. *Dentomaxillofacial Radiology* 34, 285-291. IF 0,64
76. Eggers G, Rieker M, Kress B, Fiebach J, Dickhaus H, Hassfeld S (2005) Artefacts in magnetic resonance imaging caused by dental material. *MAGMA* May;18(2):103-11. IF 0

77. Schellinger PD, Kollmar R, Meyding-Lamade UK, Fiebach JB, Hacke W (2005) Akute zerebrale Durchblutungsstörung. *Internist Sep*;46(9):982-93. IF 0,36
78. Ringleb PA, Strittmatter EI, Loewer M, Hartmann M, Fiebach JB, Lichy C, Weber R, Jacobi C, Amendt K, Schwaninger M (2005) Cerebrovascular manifestations of Takayasu arteritis in Europe. *Rheumatology (Oxford)*;44(8):1012-5. IF 4,23
79. Jüttler E, Fiebach JB, Schellinger PD, (2006) Diagnostic imaging for acute ischemic stroke management. *Expert Rev Med Devices*.3(1):113-26. IF 0,79
80. Thomalla G, Schwark C, Sobesky J, Bluhmki E, Fiebach JB, Fiehler J, Weber OZ, Kucinski T, Juettler E, Ringleb PA, Zeumer H, Weiller C, Hacke W, Schellinger PD, Röther J for the MRI in Acute Stroke Study Group of the German Competence Network Stroke (2006) Outcome and Symptomatic Bleeding Complications of Intravenous Thrombolysis Within 6 Hours in MRI-Selected Stroke Patients Comparison of a German Multicenter Study With the Pooled Data of ATLANTIS, ECASS, and NINDS tPA Trials *Stroke*; 37:852-858. IF 5,39
81. Köhrmann M, Jüttler E, Fiebach J, Huttner H, Siebert S, Schwark C, Ringleb P, Schellinger P, Hacke W (2006) MRI versus CT-based thrombolysis treatment within and beyond the 3 h time window after stroke onset: a cohort study. *The Lancet Neurology*, Volume 5, Issue 8, Pages 661-667. IF 10,2
82. Thomalla G, Sobesky J, Köhrmann M, Fiebach JB, Fiehler J, Zaro-Weber O, Krutzelmann A, Kucinski T, Rosenkranz M, Röther J, Schellinger PD (2007) Two Tales: Hemorrhagic Transformation but Not Parenchymal Hemorrhage After Thrombolysis Is Related to Severity and Duration of Ischemia MRI Study of Acute Stroke Patients Treated With Intravenous Tissue Plasminogen Activator Within 6 Hours. *Stroke*. 2007 Feb;38(2):313-8 IF 6,3
83. Jungehülsing J, Brunecker P., Fiebach JB, Nolte C, Kunze C, Villringer A, Doepp F, Schreiber S. (2007) Diagnostic transcranial ultrasound perfusion-imaging at 2.5 MHz does not affect the blood-brain barrier. *Ultrasound in Medicine and Biology* 34:147-50 IF 1,9
84. Wintermark M, Albers GW, Alexandrov AV, Alger JR, Bammer R, Baron JC, Davis S, Demaerschalk BM, Derdeyn CP, Donnan GA, Eastwood JD, Fiebach JB, Fisher M, Furie KL, Goldmakher GV, Hacke W, Kidwell CS, Kloska SP, Köhrmann M, Koroshetz W, Lee TY, Lees KR, Lev MH, Liebeskind DS, Ostergaard L, Powers WJ, Provenzale J, Schellinger P, Silbergleit R, Sorensen AG, Wardlaw J, Wu O, Warach S. Acute stroke imaging research roadmap. *AJNR Am J Neuroradiol*. 2008 May;29(5):e23-30.
85. Wintermark M, Albers GW, Alexandrov AV, Alger JR, Bammer R, Baron JC, Davis S, Demaerschalk BM, Derdeyn CP, Donnan GA, Eastwood JD, Fiebach JB, Fisher M, Furie KL, Goldmakher GV, Hacke W, Kidwell CS, Kloska SP, Köhrmann M, Koroshetz W, Lee TY, Lees KR, Lev MH, Liebeskind DS, Ostergaard L, Powers WJ, Provenzale J, Schellinger P, Silbergleit R, Sorensen AG, Wardlaw J, Wu O, Warach S. Acute stroke imaging research roadmap. *Stroke*. 2008 May;39(5):1621-8. IF 6,3
86. Brunecker P., Endres M., Nolte Ch. H., Schultze J., S. Wegener, G. Jan Jungehülsing, B. Müller, Ch. M. Kerskens, J. B. Fiebach, A. Villringer, J. Steinbrink (2008) Evaluation of an AIF correction algorithm for dynamic susceptibility contrast-enhanced perfusion MRI. *Magnetic Resonance in Medicine* 60:102–110 IF 3,1
87. Hacke W, Furlan AJ, Al-Rawi Y, Davalos A, Fiebach JB, Gruber F, Kaste M, Lipka LJ, Pedraza S, Ringleb PA, Rowley HA, Schneider D, Schwamm LH, Leal JS, Söhngen M, Teal PA, Wilhelm-Ogunbiyi K, Wintermark M, Warach S (2009) Intravenous desmoteplase in patients with acute ischaemic stroke selected by MRI perfusion-diffusion weighted imaging or perfusion CT (DIAS-2): A prospective, randomised, double-blind, placebo-controlled study. *The Lancet Neurology*;8:141-150 IF 10,2
88. Rumberg B., Baars A., Fiebach J, Ladd M., Forsting M., Senf W., Gizewski E. (2010) Cycle and gender-specific cerebral activation during a verb generation task using fMRI: comparison of women in different cycle phases, under oral contraception, and men. *Neurosci Res*, Apr;66(4):366-71 IF: 2.1
89. Schäbitz W.-R., R. Laage, G. Vogt, W. Koch, R. Kollmar, S. Schwab, D. Schneider, G. F. Hamann, M. Rosenkranz, R. Veltkamp, J. B. Fiebach, W. Hacke, J. Grotta, M. Fisher, A. Schneider (2010) AXIS: A trial of intravenous Granulocyte-colony stimulating factor (G-CSF) in acute ischemic stroke. *Stroke* IF: 7.0
90. Haeusler Karl Georg, Lydia Koch, Juliane Ueberreiter, Nalan Coban, Erdal Safak, Claudia Kunze, Kersten Villringer, Matthias Endres, Heinz-Peter Schultheiss, Jochen B. Fiebach, MD^b Alexander Schirdewan (2011) Safety and reliability of the insertable Reveal XT[®] recorder in patients undergoing 3T brain MRI. *Heart Rhythm* IF: 4.6

Book chapters:

91. Schellinger PD, Fiebach J, Röther J (2003) MRT-Diagnostik beim akuten Schlaganfall. In Schwab S, Hacke W, (Eds), *Die Notfalltherapie und Intensivtherapie des Schlaganfalls* Steinkopff Verlag, 36-47
92. Forsting M, Schellinger P, Fiebach J, Röther J (2004) Akuter Schlaganfall: Bildgebung in RR Neurologie Thieme Verlag 13-20
93. Jüttler E, Fiebach J, Schellinger P (2006) MRI in clinical Studies of stroke in *In Vivo MR Techniques in Drug Discovery and Development*, informa healthcare, ISBN 0-8493-3026-2
94. Wintermark M, Fiebach J, Marc F: Chapter 49 imaging of brain parenchyma in stroke; *Handbook of clinical neurology*, Elsevier, 2008, vol Volume 94, pp 1011-1019

Books:

95. Fiebach J, Schellinger P, with Sartor K, Heiland S, Warach S, Hacke W (2003) *Stroke MRI, CD und Buch*, Steinkopff Verlag Darmstadt, ISBN 3-7985-1372-4
96. Herborn C, Fiebach J (2006) *Klinische Magnetresonanztomographie (MRT): Ein fallorientiertes Lehrbuch*, ABW Wissenschaftsverlag.

Dr. med. Gerhard Jan Jungehülsing

Charité–Universitätsmedizin Berlin CBF
Klinik für Neurologie; Hindenburgdamm 30; 12200 Berlin
Phone: +49-30 8445 4080/4145
E-Mail: jan.jungehuelsing@charite.de



Curriculum vitae

2008-	Head of Trial Team; Center for Stroke Research Berlin (CSB), Charité
2008	Board Exam Neurological Intensive Care
2007-	Consultant (Oberarzt); Dep. of Neurology, Charité – University Medicine Berlin
2006	Board Exam Neurology
2005	Department of Psychiatry and Psychotherapy, Charité, Prof. Dr. A. Heinz
1999-2009	Coordinator of the German “Competence Network Stroke“
1998-2008	Berlin Neuroimaging Center (BNIC; former „Klinische Forschergruppe“)
1998-	Dep. of Neurology, Charité - University Medicine Berlin (Einhäupl, Villringer, Endres)
1998	Board Exam and medical licence
1997-1998	Practical Year Training: Queen Square, London; St. Hedwig Hospital, Berlin; Memorial Sloan Kettering Cancer Center, New York; General Hospital, Osnabrück
1993-1998	Medical School Christian-Albrecht-University Kiel and Humboldt University Berlin
1994-1997	Doctoral Thesis: Assessment of cerebral hemoglobin-oxygenation changes due to a motor stimulation paradigm –an investigation with near infrared spectroscopy. Prof. Einhäupl, Department of Neurology, Charité, Humboldt University Berlin

Research fields

Epidemiology and Management of Stroke; MR-Imaging and Functional Imaging of Stroke; Neuropathic and Central Post-Stroke Pain, Exercise and cerebral hemodynamics

Activities in the scientific community, honors, awards

- Ad Hoc Reviewer for Cerebrovascular Diseases; European Journal of Neurology; Frontiers in Stroke (Editorial Reviewer); Journal of Cerebral Blood Flow and Metabolism (JCBF); Journal of Neurology, Neurosurgery and Psychiatry (JNNP); Neuroepidemiology; Stroke
- Fellow of the ESO and DSG; Consultant Stiftung Deutsche Schlaganfallhilfe
- Poster Awards Deutsche Gesellschaft für Neurologie 2000, 2002, 2003 and 2004

Clinical studies (selected performance)

2008-	Effect of intense aerobic dynamic exercise on cerebral hemodynamics (EXERCISE)	PI
2008-	AX200 (G-CSF) for the Treatment of Acute Ischemic Stroke, Phase II Trial (AXIS-2b); PI	PI
2009-	Desmoteplase in subjects with acute ischemic stroke (DIAS-3)	Co-I
2009-	IMPACT-24: Ischemic Stroke System ISS, as Adjunct to Standard of Care in Acute Ischemic Stroke	Co-PI
2007	Stroke In young Fabry Patients (SIFAP)	PI
2006-	Neurochemical Basics in Cognitive Aging (DA-Aging; (IIT))	PI
2005	Desmoteplase in Acute Stroke-DIAS-2 (PAION)	Co-I
2004	Levetiracetam bei zentralem Schmerz nach Schlaganfall (LESS; IIT)	PI
2003	Safety of Tirofiban in Acute Ischemic Stroke (SaTIS; IIT)	Co-I
1999	Berlin Acute Stroke Study (BASS; epidemiolog. Studie; IIT)	PI
1999	Multi-Center MR-Studies of the ImagingNet CompetenceNet Stroke (IIT)	Co-I

Co-Investigator (Co-I), Investigator Initiated Trial (IIT), Principal Investigator (PI)

Memberships

European Stroke Organisation (ESO, Fellow); Deutsche Gesellschaft für Neurologie (DGN); Deutsche Schlaganfallgesellschaft (DSG; founding member); Competence Net Stroke (CNS; founding member); Deutsche Gesellschaft für Klinische Neurophysiologie und funktionelle Bildgebung; Deutsche Gesellschaft für Neurologische Intensiv- und Notfallmedizin (DGNI); Deutsche Gesellschaft zum Studium des Schmerzes (DGSS)

Publications (selected)

- Schmidt W, Endres M, Dimeo F, Jungehülsing GJ. Train the vessel, gain the brain - physical activity and vessel function and the impact on stroke prevention and outcome in cerebrovascular disease. *Cerebrovasc Dis.* 2011; accepted for publication.
- Jungehülsing GJ, Liman, T, Brunecker P, Ebel A, Endres M, Buschmann I, Pagonas N, Buschmann EE. Does External Counterpulsation Augment Mean Cerebral Blood Flow in the Healthy Brain? Effects of External Counterpulsation on Middle Cerebral Artery Flow Velocity and Cerebrovascular Regulatory Response in Healthy Subjects. *Cerebrovasc Dis.* 2010;30:612-617
- Müller-Nordhorn J, Wegscheider K, Nolte CH, Jungehülsing GJ, Rossnagel K, Reich A, Roll S, Villringer A, Willich SN. Population-based intervention to reduce prehospital delays in patients with cerebrovascular events. *Arch Intern Med.* 2009 Sep 14;169:1484-90.
- Nolte CH, Jungehülsing GJ, Rossnagel K, Roll S, Haeusler KG, Reich A, Willich SN, Villringer A, Müller-Nordhorn J. Vascular risk factor awareness before and pharmacological treatment before and after stroke and TIA. *Eur J Neurol.* 2009;16:678-83.
- Jungehülsing GJ, Müller-Nordhorn J, Nolte CH, Roll S, Rossnagel K, Wagner A, Einhaupl KM, Willich SN, Villringer A. Prevalence of Stroke and Stroke Symptoms: a population-based Survey of 28090 Participants. *Neuroepidemiology.* 2008;30:51-57.
- Jungehülsing GJ, Brunecker P, Nolte CH, Fiebach JB, Kunze C, Doepp F, Villringer A, Schreiber SJ. Diagnostic transcranial ultrasound perfusion-imaging at 2.5 MHz does not affect the blood-brain barrier. *Ultrasound Med Biol.* 2008;34:147-50.
- Haeusler KG, Schmidt W, Fohring F, Meisel C, Helms T, Jungehülsing GJ, Nolte CH, Schmolke K, Wegner B, Meisel A, Dirnagl U, Villringer A, Volk HD. Cellular immunodepression preceding infectious complications after acute ischemic stroke in humans. *Cerebrovasc Dis.* 2007;25:50-58.
- Jungehülsing GJ, Rossnagel K, Nolte CH, Müller-Nordhorn J, Roll S, Klein M, Wegscheider K, Einhaupl KM, Willich SN, Villringer A: Emergency Department Delays in Acute Stroke – Analysis of Time between ED Arrival and Imaging. *Eur J Neurol.* 2006;13(3):225-32
- Müller-Nordhorn J, Nolte CH, Rossnagel K, Jungehülsing GJ, Reich A, Roll S, Villringer A, Willich SN. Knowledge About Risk Factors for Stroke. A Population-Based Survey With 28 090 Participants. *Stroke.* 2006; 24: 196-202
- Taskin B, Jungehülsing GJ, Ruben J, Brunecker P, Krause T, Blankenburg F, Villringer A. Preserved Responsiveness of Secondary Somatosensory Cortex in Patients with Thalamic Stroke. *Cereb Cortex.* 2005; 16:1431-1439
- Rossnagel K, Jungehülsing GJ, Nolte CH, Müller-Nordhorn J, Roll S, Wegscheider K, Villringer A, Willich SN. Out-of-hospital delays in patients with acute stroke. *Ann Emerg Med.* 2004;44:476-83
- Wegener S, Gottschalk B, Jovanovic V, Knab R, Fiebach J, Schellinger PD, Kucinski T, Jungehülsing GJ, Brunecker P, Müller B, Banasik A, Amberger N, Wernecke KD, Siebler M, Rother J, Villringer A, Weih M; for the MRI in Acute Stroke Study Group of the German Competence Network Stroke: Transient Ischemic Attacks Before Ischemic Stroke: Preconditioning the Human Brain? A Multicenter Magnetic Resonance Imaging Study. *Stroke.* 2004;35:616-621.
- Rother J, Schellinger PD, Gass A, Siebler M, Villringer A, Fiebach JB, Fiehler J, Jansen O, Kucinski T, Schoder V, Szabo K, Junge-Hülsing GJ, Hennerici M, Zeumer H, Sartor K, Weiller C, Hacke W. Effect of intravenous thrombolysis on MRI parameters and functional outcome in acute stroke <6 hours. *Stroke.* 2002;33:2438-45



Berlin, Dec 31 2010

Juliane Maria Ueberreiter

Date of birth 25.06.1985, Berlin, Germany

Address Center of Stroke Research Berlin (CSB)
Charité - University Medicine Berlin
Hindenburgdamm 30, 12203 Berlin

Phone 0049 30 8445 4101

Fax 0049 30 8445 4099

e-mail juliane.ueberreiter@charite.de



Curriculum vitae

2011 - Research investigator, Center of Stroke Research Berlin (CSB),
Charité - University Medicine Berlin

2009 - Promotion (Dr. med.), ongoing

2004 - 2011 Medical school, Charité-University Medicine Berlin (MD)

1991 - 2004 Higher school education (Abitur), Katholische Schule Salvator (Berlin)

Publications

1. Haeusler KG, Koch L, Ueberreiter J et al. *Safety and reliability of the insertable Reveal XT recorder in patients undergoing 3 Tesla brain magnetic resonance imaging.* Heart Rhythm. 2011 Mar;8(3):373-6.
2. Haeusler KG, Koch L, Ueberreiter J et al. *Stroke risk associated with balloon based catheter ablation for atrial fibrillation: Rationale and design of the MACPAF Study.* BMC Neurol. 2010 Jul 21;10:63.

J. Ueberreiter

Berlin, den 29.03.2011

Claudia Elisabeth Kunze

Position executive medical technician
Address Center for Stroke Research Berlin – CSB,
Academic Neuroradiology
Charité – University Medicine Berlin
Campus Benjamin Franklin
Hindenburgdamm 30, 12203 Berlin, Germany
Phone +49-30-8445-4118
Fax +49-30-8445-4099
e-mail c.kunze@charite.de



Education and Work experience

2010 Further education – Study Coordinator, Coordination Center for Clinical Studies, Charité Berlin
2009 - Studies in International Management at FOM - University of applied sciences for economics and management
2009 Further education - Project Management – Basic Principles & Advanced course Education academy – Charité Berlin
2007 – 2008 several additional businesses – Software evaluation, post processing of imaging data,
2007 Further education - Study Nurse, Coordination Center for Clinical Studies, Charité Berlin
2006 – 2008 Study Coordinator for a Phase 1 – Proof of Concept Study, Biotectid GmbH, Leipzig
2006 Basics of Clinical Studies & GCP-training, Coordination Center for Clinical Studies, Charité Berlin
2005 - Executive assistant medical technician/ Study nurse
Charité – University of Berlin, Department of Neurology,
Competence Network Stroke, Center for Stroke Research Berlin – CSB,
Academic Neuroradiology - CSB
2002 – 2005 Assistant medical technician, Department of Nuclear Medicine, University of Leipzig

Experiences in Clinical Studies (selected studies)

2011 - CaMRISS – Cardiac MRI in Ischemic Stroke Study
2010 - Bay94-9172 – Efficacy and Safety of Bay94-9172 PET Imaging for detection of cerebral Beta-Amyloid
2009 - MACPAF – Mesh Ablator versus Cryoballoon Pulmonary Vein Ablation of Symptomatic Paroxysmal Atrial Fibrillation
2009 - DIAS-3 – Desmoteplase in Acute Ischemic Stroke
2008 - Axis2b – AX200 (GCS-F) for the treatment of Acute Ischemic Stroke
2008 – 2010 DTI –Imaging Study – Characterisation of Acute Cerebral Ischemia using Diffusion Tensor Imaging
2008 – 2009 Early Aggrenox – Secondary Prophylaxis of Acute Ischemic Stroke
2007 – 2008 Oxygen Extraction – IIT – Berlin Neuroimaging Center Berlin – BNIC
2007 – 2008 Biotectid POC EP 1645 – Use of Anti-CD4mAb-Fragment for Imaging of chronic inflammation in Patients with Active Rheumatoid Arthritis
2005 – 2007 DIAS-2 – Desmoteplase of Acute Ischemic Stroke
2005 - different IITs – Center for Stroke Research Berlin and BNIC

Berlin, 30th January 2011



Prof. Dr. Peter U. Heuschmann, MPH
Charité – Center for Stroke Research Berlin (CSB)



Short CV

1991-1997	University of Erlangen-Nuremberg, Medical School
1997-2002	House officer and Research Fellow, Dep. of Neurology, Unit for Stroke Research and Public Health Medicine, University of Erlangen-Nuremberg
1999-2001	Ludwig-Maximilians-University Munich, Master of Public Health
2003-2006	Lecturer, Inst. of Epidemiology and Social Medicine, University of Muenster
2004	Temporary advisor, World Health Organisation, Geneva
2006	Habilitation in Epidemiology and Social Medicine, University of Muenster
Since 2006	Member Nucleus “Prevention, Epidemiology and Population Science”, European Association of Cardiovascular Prevention and Rehabilitation
2006-2008	Clinical Senior Lecturer Health Services Research, King’s College London
2007-2008	Member “Intercollegiate Stroke Working Party”, Royal College of Physicians, London, UK
Since 2008	Professor (W2) Clinical Epidemiology of Stroke at the Charité Berlin
Since 2009	Member Board of Directors, Center for Stroke Research Berlin (CSB)
Since 2009	WP lead EU FP7 funded collaborative project “EIS”
Since 2010	Chair Commission “Health Care Research, Quality Assurance and Health Economy” within the German Stroke Society

Academic Honours

Since 2009	Visiting Professor, King’s College London, Dep. of Public Health Sciences
2005-2007	Junior Member, Working Group “Challenges and problems of ageing populations”, Acatech-Group and Leopoldina-Academy
2004	Offspring award of the German Society of Epidemiology

Research focus:

Clinical epidemiology of stroke, health services research, epidemiological methods, register and follow up studies in stroke and outcomes research

Five most relevant publications

Heuschmann PU, Wiedmann S, Wellwood I, Rudd A, Di Carlo A, Bejot Y, Ryglewicz D, Rastenyte D, Wolfe CDA (2010). Outcome three months after stroke in Europe. The European Registers of Stroke (EROS) Investigators. **Neurology**. 2010; in press

Toschke AM, Gulliford MC, Wolfe CDA, Rudd AG, Heuschmann PU (2010). Antihypertensive treatment after first stroke in primary care: results from the General Practitioner Research Database (GPRD). **J Hypertension**; in press

Heuschmann PU, Di Carlo A, Bejot Y, Rastenyte D, Ryglewicz D, Sarti C, Torrent M, Wolfe CDA (2009) Incidence of stroke in Europe at the beginning of the 21st century: the European Registers of Stroke (EROS) Investigators. **Stroke** 40:1557-1563

Heuschmann PU, Grieve AP, Toschke MT, Rudd AG, Wolfe CDA (2008) Ethnic group disparities in ten year trends in stroke incidence and vascular risk factors: the South London Stroke Register (SLSR). **Stroke** 39:2204-2210

Truelsen T, Heuschmann PU, Bonita R, Arjundas G, Dalal P, Damasceno A, Nagaraja D, Ogunniyi A, Oveisgharan S, Radhakrishnan K, Skvortsova VI, Stakhovskaya A (2007) Standard tool for developing stroke registers in low and middle income countries: Experiences from a feasibility study of a stepwise approach to stroke surveillance (STEPS Stroke). **Lancet Neurology** 6:134-139